

DESTROY

The most effective and targeted way to destroy an infected plant is by stem injecting with glyphosate (eg Round-Up). The aphids that spread Bunchy Top are contained by spraying a non-toxic SACOA BioPest Oil (certified for organic farming) into the throat of the plant to immediately immobilise the aphids.

If glyphosate is not used then infected plants must be physically destroyed. This physical destruction must include the entire plant, roots to leaves.

Again, the non-toxic SACOA BioPest Oil must still be used to immediately immobilise the aphids prior to plant destruction.

Please do not disturb the infected plant in any way until the aphids have been immobilised using the BioPest Oil. If you require help, call the Hotline and an inspector will assist with the destruction at no cost.



We appreciate
your help.

WHAT IS BUNCHY TOP?

Banana Bunchy Top is the most devastating virus disease worldwide for all varieties of bananas. The Bunchy Top Project is working to contain the spread and minimise the number of infected plants in the containment zone. Bunchy Top is spread only by aphids and does not contaminate the soil. There is no treatment that will cure an infected plant once it has Bunchy Top. It must be destroyed. Once an infected plant is successfully destroyed a new plant can be planted in the same spot with no risk of contamination.

HOW CAN YOU HELP?

If you **SPOT** a banana plant that looks to have the symptoms of Bunchy Top, **REPORT** it by calling the Bunchy Top Hotline or via The Bunchy Top Project Facebook Page.

WHAT WILL HAPPEN?

A Bunchy Top Inspector will ask you to provide particular photos of the suspect plant so they can **VERIFY** if it is infected by Bunchy Top. If it is clean, fantastic! If it is infected by Bunchy Top then you or an inspector must **DESTROY** it.



Horticulture
Innovation
Australia



The National Bunchy Top Project is funded by Horticulture Innovation Australia Limited using the banana industry levy and matched funds from the Australian Government. The project is supported by:



Queensland
Government



Department of
Primary Industries

SPOT REPORT VERIFY DESTROY



HOTLINE: 1800 068 371

HOTLINE: 1800 068 371

HOTLINE: 1800 068 371

SPOT

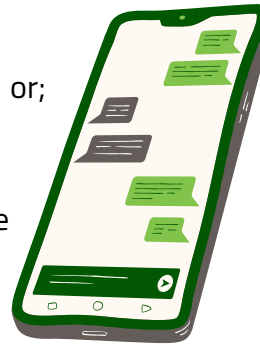
Bunchy Top is difficult to see in its early stages on any banana variety. When the disease is more advanced you will notice:

- Each new leaf becomes shorter.
- Each new leaf stands more upright giving a bunched leaf appearance.
- The leaf edges roll slightly upwards.
- The leaves are slightly yellow/lighter green.
- The plant growth is stunted (shorter plant).
- No bunch or a deformed bunch.



REPORT

- Call the Bunchy Top Hotline 1800 068 371 or;
- Go to The Bunchy Top Project Facebook page and click "Send Message".



We cannot be everywhere, so your help is invaluable in stopping the spread of Bunchy Top. We don't mind false alarms, so don't hesitate to call if something just does not quite look right with a banana plant.

Dark, unbroken lines running up the midrib of the leaf base are one of the most obvious signs of Bunchy Top.

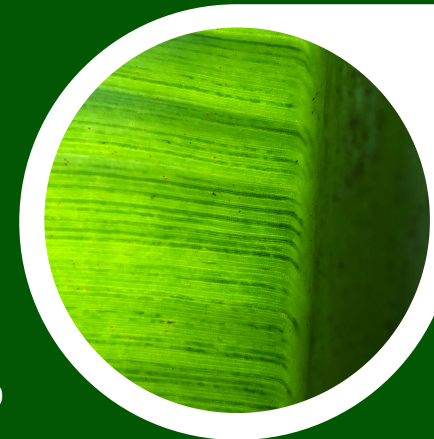


When you contact The Bunchy Top Project we will ask you to help us verify the infection and we will discuss options to destroy the plant either with or without chemical, and with or without an inspector attending.

VERIFY

You can help the Bunchy Top Project verify whether your banana plants have Bunchy Top by capturing two photos (your phone camera is fine!)

1



The Close Up

Stand close to the plant. Take a photo from underneath the newest leaf, with the sun shining through. The dark dot-dashes shown in this image are distinctive to Bunchy Top.



2

The Whole Plant

Stand far enough away to capture the entire plant in one shot.

HOTLINE: 1800 068 371

HOTLINE: 1800 068 371

HOTLINE: 1800 068 371